



Please dispose of packaging for the product in a responsible manner. It is suitable for recycling. Help to protect the environment, take the packaging to the local amenity tip and place into the appropriate recycling bin.



Never dispose of electrical equipment or batteries in with your domestic waste. If your supplier offers a disposal facility please use it or alternatively use a recognised re-cycling agent. This will allow the recycling of raw materials and help protect the environment.

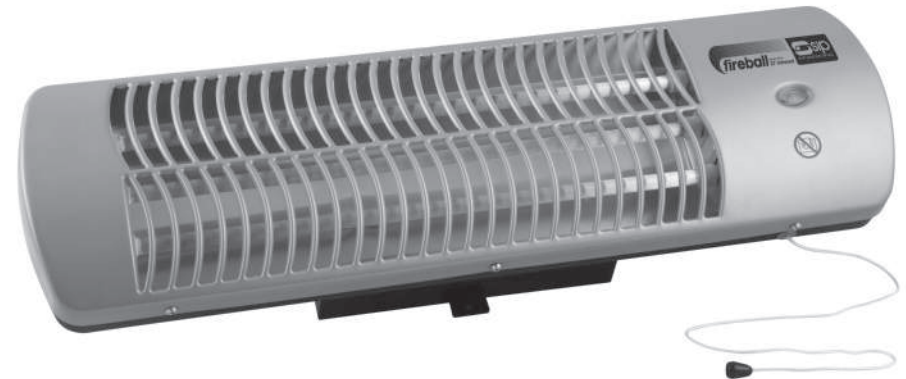


SIP INDUSTRIAL

machinery specialists since 1968

Fireball 27

Wall Mounted Heater



FOR HELP OR ADVICE ON THIS PRODUCT PLEASE CONTACT YOUR DISTRIBUTOR,
OR SIP DIRECTLY ON:
TEL: 01509500400
EMAIL: sales@sip-group.com or technical@sip-group.com
www.sip-group.com

09118

Please read and fully understand the instructions in this manual before operation. Keep this manual safe for future reference.

DECLARATION OF CONFORMITY

Declaration of Conformity

We

SIP (Industrial Products) Ltd
Gelders Hall Road
Shepshed
Loughborough
Leicestershire
LE12 9NH
England

As the manufacturer's authorised representative within the EC
declare that the


Fireball 27 Wall Mounted Heater - SIP Part. No. 09118

Conforms to the requirements of the following directive(s), as indicated.

2006/95/EC	Low Voltage Directive
2014/30/EU	EMC Directive
2011/65/EU	RoHS Directive

And the relevant harmonised standard(s), including:

EN 55014-1:2006+A1:2009+A2:2011
EN 55014-2:1997+A1:2001+A2:2008
EN 61000-3-2:2014
EN 61000-3-3:2013
EN 60335-2-30:2009+A11:2012
EN 60335-1:2012+AC:2014+A11:2014
EN 62233:2008

Signed: 

Mr P. Ippaso - Managing Director - SIP (Industrial Products) Ltd
Date: 23/06/2016.



<i>Page No.</i>	<i>Description</i>
4.	Safety Symbols Used Throughout This Manual
4.	Safety Instructions
7.	Electrical Connection
8.	Guarantee
9.	Technical Specifications
9.	Getting to Know Your Heater
10.	Assembly Instructions
11.	Operating Instructions
12.	Exploded Drawing & Parts List
13.	Circuit Diagram
15.	Declaration of Conformity

SAFETY SYMBOLS USED THROUGHOUT THIS MANUAL



Danger / Caution: Indicates risk of personal injury and/or the possibility of damage.



Warning: Risk of electrical injury or damage!



Note: Supplementary information.

SAFETY INSTRUCTIONS



IMPORTANT: Please read the following instructions carefully, *failure to do so could lead to serious personal injury and / or damage to the heater.*

When using your heater, basic safety precautions should always be followed to reduce the risk of fire, electric shock, personal injury and / or damage to the heater. Read all these instructions before operating the heater and save this user manual for future reference.

SIP recommends that this heater should **not** be modified or used for any application other than that for which it was designed. If you are unsure of its relative applications do not hesitate to contact us and we will be more than happy to advise you.

KNOW YOUR HEATER: Read and understand the owner's manual and labels affixed to the heater. Learn its applications and limitations, as well as the potential hazards specific to it.

DO NOT USE THE HEATER IN DANGEROUS ENVIRONMENTS: Do not use your heater in damp or wet locations, including bathrooms or similar or expose it to rain. Always provide adequate space around the heater.

DO NOT install the heater in the immediate vicinity of bath tubs, showers, wash basins, swimming pools, etc.

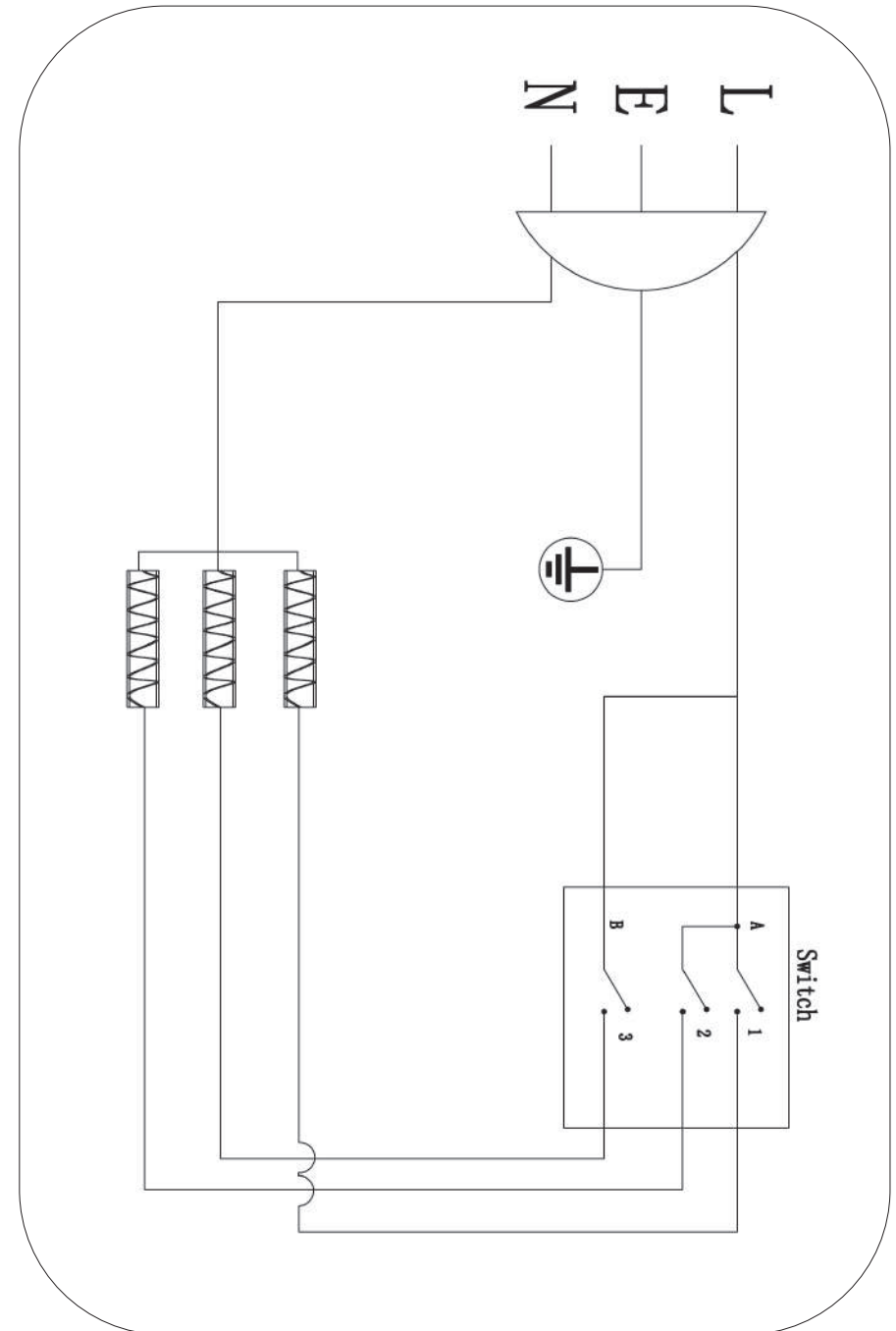
DO NOT OPERATE THE HEATER IN EXPLOSIVE ATMOSPHERES: Do not use the heater in the presence of flammable liquids, gases, dust or other combustible sources.

KEEP CHILDREN AND UNTRAINED PERSONNEL AWAY FROM THE WORK AREA: All visitors should be kept at a safe distance from the work area.

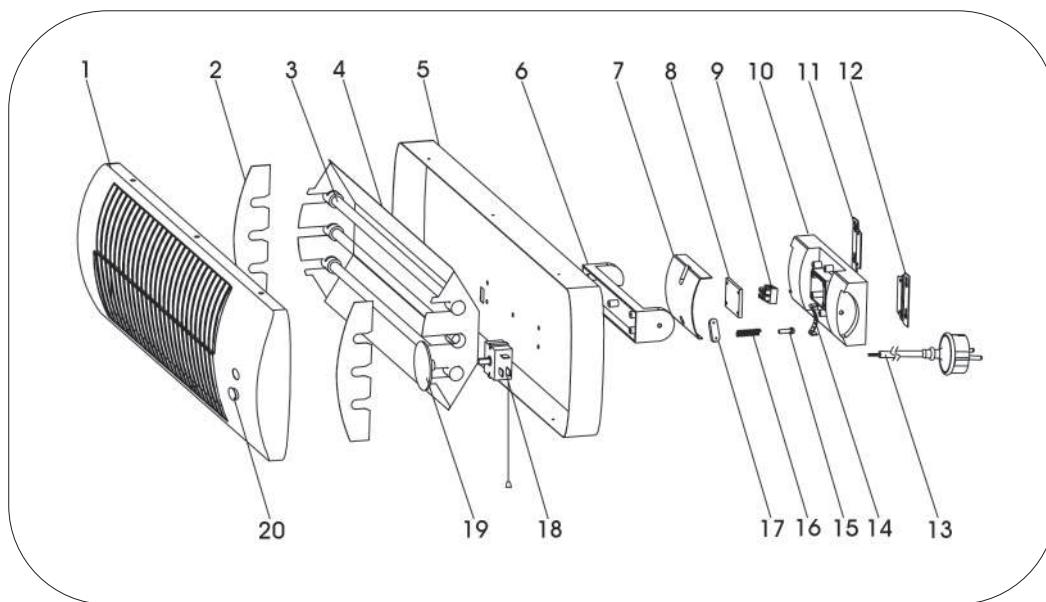
STAY ALERT: Always watch what you are doing and use common sense.

DISCONNECT THE HEATER FROM THE MAINS SUPPLY: When not in use.

CIRCUIT DIAGRAM



EXPLODED DRAWING & PARTS LIST



Ref. No.	Description	SIP Part No.	Ref. No.	Description	SIP Part No.
1.	Protection cover	PW09-00185	11.	Left wall bracket	PW09-00195
2.	Side support	PW09-00186	12.	Right wall bracket	PW09-00196
3.	Quartz element	PW09-00187	13.	Mains lead	PW09-00197
4.	Reflection plate	PW09-00188	14.	Slide block	PW09-00198
5.	Back cover	PW09-00189	15.	Insert pin	PW09-00199
6.	Tilting bracket	PW09-00190	16.	Spring	PW09-00200
7.	Terminal block cover	PW09-00191	17.	Pressing plate	PW09-00201
8.	Cover	PW09-00192	18.	Switch	PW09-00202
9.	Terminal block	PW09-00193	19.	Dial	PW09-00203
10.	Junction box	PW09-00194	20.	Display window	PW09-00204

SAFETY INSTRUCTIONS....cont

AVOID UNINTENTIONAL STARTING: Make sure on the display window it is on “0” (off) before connecting the heater to the mains supply.

DO NOT ABUSE THE MAINS LEAD: Never carry the heater by the mains lead or pull it to remove the plug from the mains socket. Keep the mains lead away from heat, oil and sharp edges. If the mains lead is damaged, it must be replaced by the manufacturer or its service agent or a similarly qualified person in order to avoid unwanted hazards.

HAVE YOUR HEATER REPAIRED BY A QUALIFIED PERSON: The heater is in accordance with the relevant safety requirements. Repairs should only be carried out by qualified persons using original spare parts, otherwise this may result in considerable danger to the user.

- **DANGER!** Check that the heater is in sound condition and good working order. Take immediate action to repair or replace damaged parts.
- Use recommended parts only - Unapproved parts may be dangerous and will invalidate the warranty.
- **WARNING!** Do not direct the heater towards any combustible materials (e.g. wooden items, cloth, plastics, paper, etc).
- **WARNING!** Do not use the heater near flammable material, liquids, solids, gases or compressed gas cylinders.
- Do not allow untrained persons to operate the heater and do not operate the heater without all covers etc. correctly fitted.
- Do not handle the heater when it is on or still hot - always turn it off and allow it to cool.
- Do not leave the heater unattended when in use. Switch the heater off and unplug from the mains supply before leaving the area.
- Do not obstruct the front of the heater.
- Do not use any form of ducting in front of the heater.
- Do not use the heater to dry clothes or similar.
- Do not allow children or animals near the heater, particularly when in use, or whilst still hot.
- **WARNING! RISK OF ELECTRIC SHOCK.** Do not expose the heater to water spray, rain, dripping water or moisture of any kind.
- Do not touch the protection cover or any internal parts when operating, or when first switched off as these can be hot and will take time to cool.
- Ensure that the heater is correctly turned off when not in use and store in a safe, dry area, out of reach of children.
- Do not unplug the heater to switch it off - pull the cord till it reaches 0 (off).
- **NEVER** use this heater where flammable vapours may be present.
- Keep all combustible materials away from this heater.
- **NEVER** cover the heater.
- **NEVER** move or handle the heater whilst still hot.
- **ALWAYS** keep children and animals away from heater.

SAFETY INSTRUCTIONS....cont

- Only use the heater in an horizontal position.
- Never stand on the heater.
- Never connect any other electrical appliances to the same socket as the heater.
- **DO NOT** dismantle or tamper with the heater, as this may be dangerous and will invalidate the warranty.
- **DO NOT** install the heater in a bathroom or anywhere that has a water supply.
- Never install the heater behind a door.
- Understand the operating environment; Before each use the operator should assess, understand and where possible reduce the specific risks and dangers associated with the operating environment. Bystanders should also be made aware of any risks associated with the operating environment.

If a problem with the heater is experienced, or if the mains lead or plug become damaged, stop operation and contact your distributor for repair.

- If the heater is used in a place of work all rules and laws etc. relating to the use of portable electrical appliances should be followed.

WARNING: Risk of Electric Shock!

- Use only the electrical power (voltage and frequency) specified on the specification label of the heater.
- Use only a three-prong, grounded outlet.
- **ALWAYS** unplug the heater when not in use.



Caution: The warnings and cautions mentioned in this user manual can not cover all possible conditions and situations that may occur. It must be understood by the operator that common sense and caution are factors which cannot be built into this product, but must be applied.

OPERATING INSTRUCTIONS

SWITCHING THE HEATER ON

- Plug into the mains supply and switch on.
- Use the pull cord to turn the heater on.



Note: You may notice when turning on the heater that there is a slight vibrations, don't become alarmed as they will fade away. This is normal behavior of the heater.

- To adjust the heat settings pull on the cord and check the display window, the heat settings are:
1 = 500w
2 = 1000w
3 = 1500w



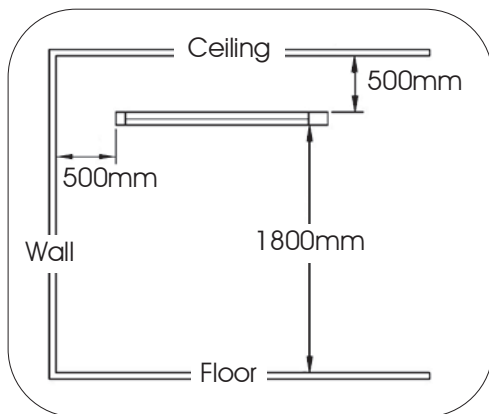
TURNING THE HEATER OFF

- To switch off the heater pull the cord until it reaches 0 (off) on the display window.
- Turn off on the wall socket and remove the plug.

ASSEMBLY INSTRUCTIONS

RECOMMENDED CLEARANCE

The minimum clearance should be 500mm from the ceiling and 500mm from any perpendicular wall and 1800mm from the floor. Make sure that surface is capable of supporting the weight of the heater.

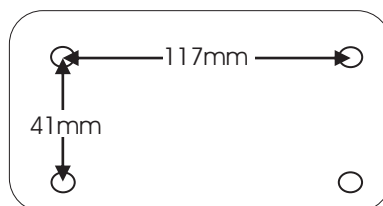


MOUNTING THE HEATER TO A WALL



Note: Do not install the heater in a bathroom or anywhere that has a water supply.

- You will need to drill four holes into the wall, see right diagram for measurements (centre to centre).



- Insert four screws into the pre-drilled holes.
- Place the heater over the four screw heads, then gently push down on the heater so the screw heads drop down into the slots.

ELECTRICAL CONNECTION

WARNING! It is the responsibility of the owner and the operator to read, understand and comply with the following:

You must check all electrical products, before use, to ensure that they are safe.

You must inspect power cables, plugs, sockets and any other connectors for wear or damage.

You must ensure that the risk of electric shock is minimised by the installation of appropriate safety devices; A residual current circuit breaker (RCCB) should be incorporated in the main distribution board. We also recommend that a residual current device (RCD) is used. It is particularly important to use an RCD with portable products that are plugged into a supply which is not protected by an RCCB. If in any doubt consult a qualified electrician.

Connecting to the power supply:

This SIP heater is fitted with a standard 230v ~ 13 amp type plug. Before using the heater, inspect the mains lead and plug to ensure that neither are damaged. If any damage is visible have the heater inspected / repaired by a suitably qualified person. If it is necessary to replace the plug a heavy duty impact resistant plug would be preferable.

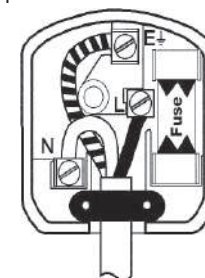
The wires for the plug are coloured in the following way:

Yellow / green	Earth
Blue	Neutral
Brown	Live

As the colours of the wires may not correspond with the markings in your plug, proceed as follows: The wire which is coloured blue, must be connected to the terminal marked with N or coloured black. The wire which is coloured brown, must be connected to the terminal, which is marked L or coloured red. The wire which is coloured yellow / green should be connected to the terminal which is coloured the same or marked



Always secure the wires in the plug terminal carefully and tightly. Secure the cable in the cord grip carefully.



ELECTRICAL CONNECTION....cont



Warning: Never connect live or neutral wires to the earth terminal of the plug. Only fit an approved plug with the correct rated fuse. If in doubt consult a qualified electrician.



Note: Always make sure the mains supply is of the correct voltage and the correct fuse protection is used. In the event of replacing the fuse always replace the fuse with the same value as the original.



Note: If an extension lead is necessary in order to reach the mains supply; The cross section should be checked so that it is of sufficient size so as to reduce the chances of voltage drops. Always fully unwind the lead during use.

GUARANTEE

This SIP heater is covered by a 12 month parts and labour warranty covering failure due to manufacturers defects. This does not cover failure due to misuse or operating the heater outside the scope of this manual - any claims deemed to be outside the scope of the warranty may be subject to charges including, but not limited to parts, labour and carriage costs.

The warranty does not cover consumable parts such as the quartz elements, pull cord, etc.

In the unlikely event of warranty claims, contact your distributor as soon as possible.



Note: Proof of purchase will be required before any warranty can be honoured.

TECHNICAL SPECIFICATIONS

<i>Part Number</i>	09118
<i>Input Voltage</i>	220V - 240V ~ 50hz
<i>Heat Output</i>	Setting 1 - 500w
	Setting 2 - 1000w
	Setting 3 - 1500w
<i>Tilting Range</i>	0° - 45°
<i>Minimum Mounting Height</i>	1800mm
<i>Minimum Ceiling/Wall Clearance</i>	500mm
<i>Net Weight</i>	1.75Kg

GETTING TO KNOW YOUR HEATER

